

K831

Glued Photo Mount
Finished Size 135mm x 190mm
Flat Size 409mm x 214mm (incl. tabs)



Guidelines

Thank you for downloading your **Folder King** template. This template will help you to set up your artwork correctly for your chosen product.

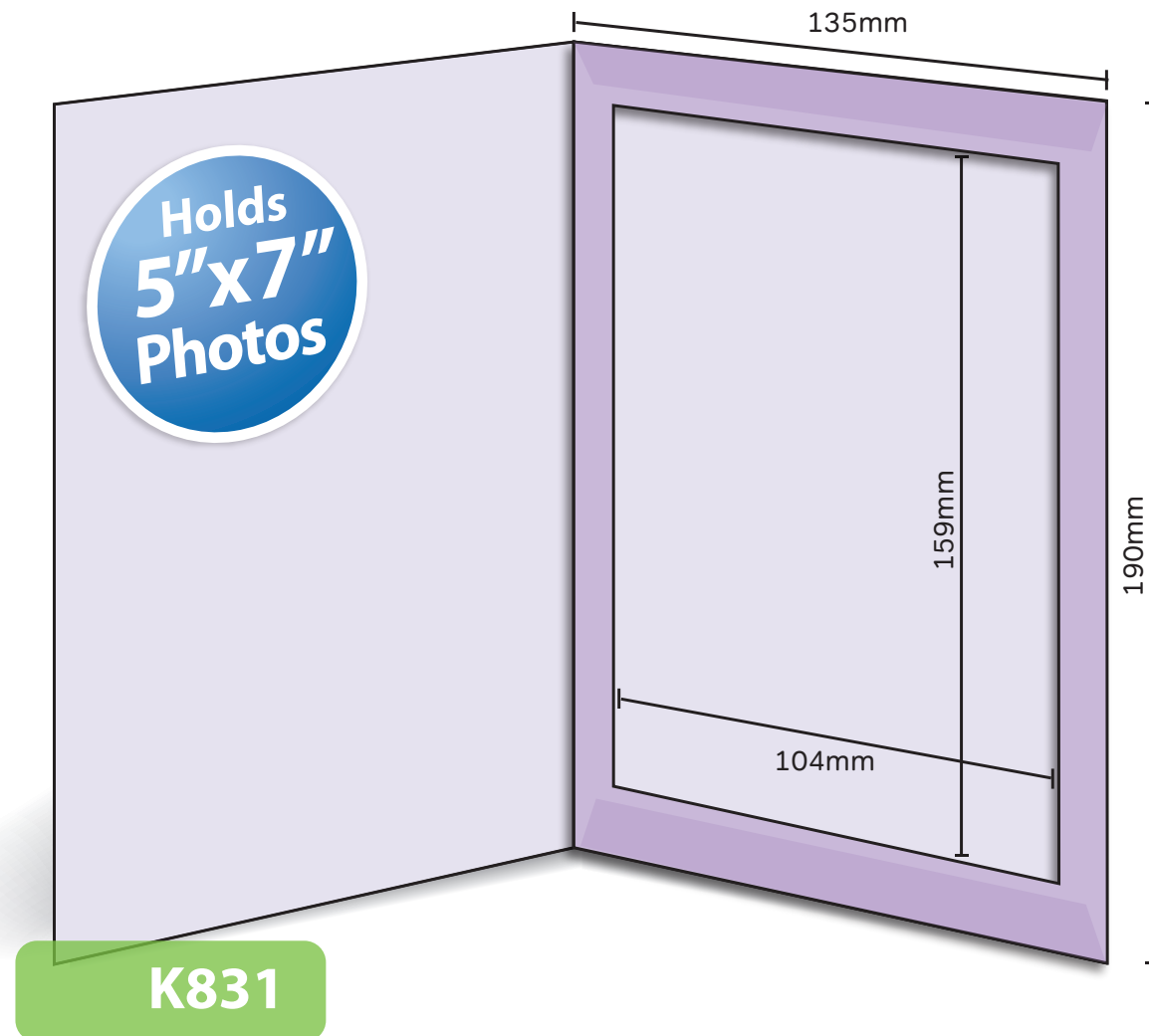
This document can be opened and edited in Adobe Illustrator CS4 and above. Alternatively, these templates can be placed into Adobe InDesign or Quark XPress documents.

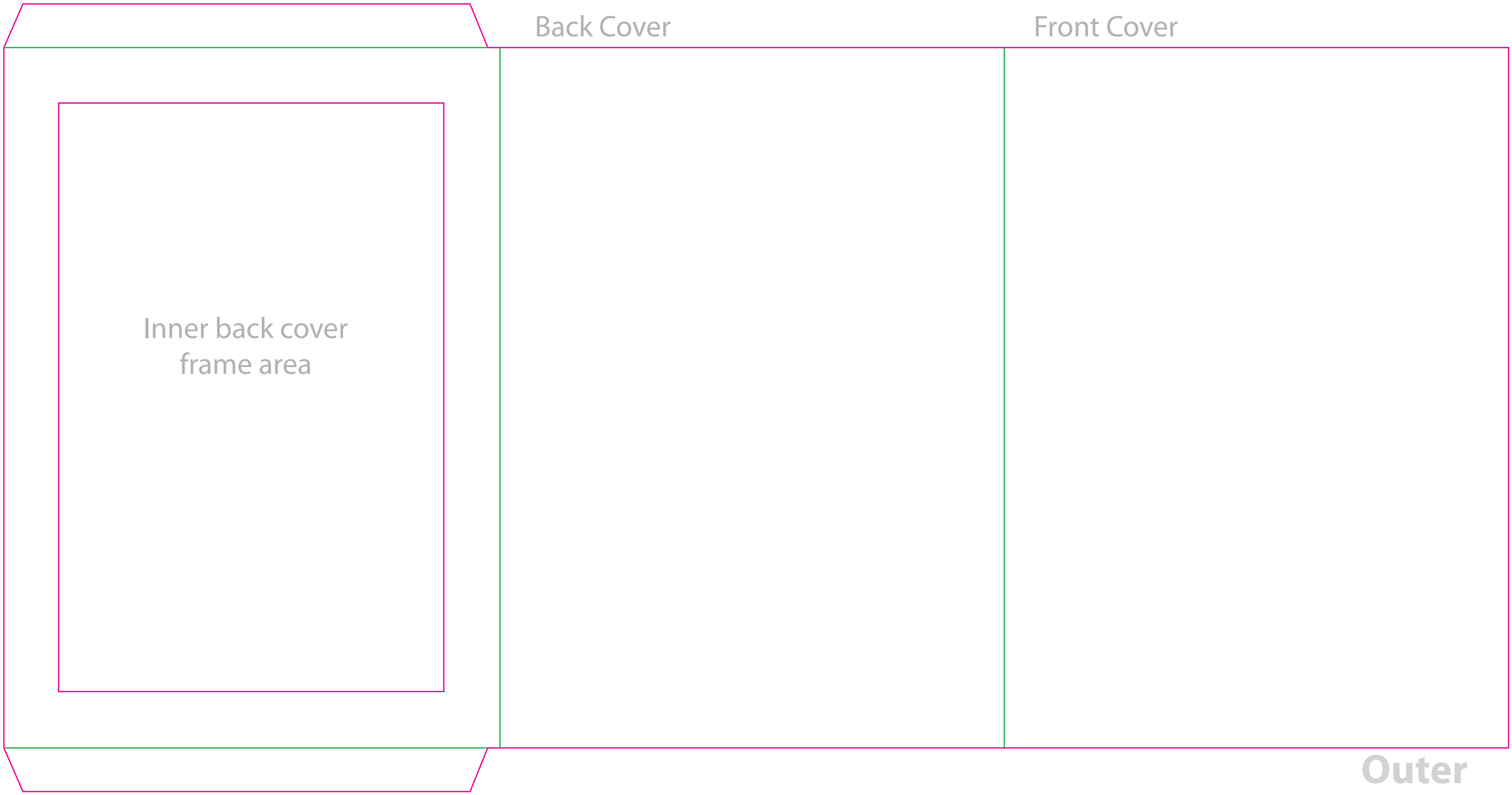
This document is set up to the exact flat size of your chosen folder and contains templates for both the inner and outer. Pink lines show cuts, green lines will be scored and folded. Please do not alter the document size or the colour and position of the lines in this template.

Please provide a minimum of 3mm bleed beyond the outline of the folder on all outer edges.

When creating your artwork, we also recommend a 'quiet area' where no text is placed closer than 8mm to the inside edges and spines of the folder template. This ensures that no text is at risk of being lost when your folders are trimmed.

For further information and instructions with helpful guides and how-to videos, please refer to our artwork guidelines at: www.folderking.co.uk/artwork-guide





Back Cover

Front Cover

Inner back cover
frame area

Outer

Inside Front Cover

Inside Back Cover

Back of frame
Leave blank

Inner

